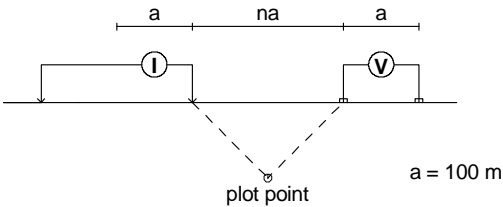


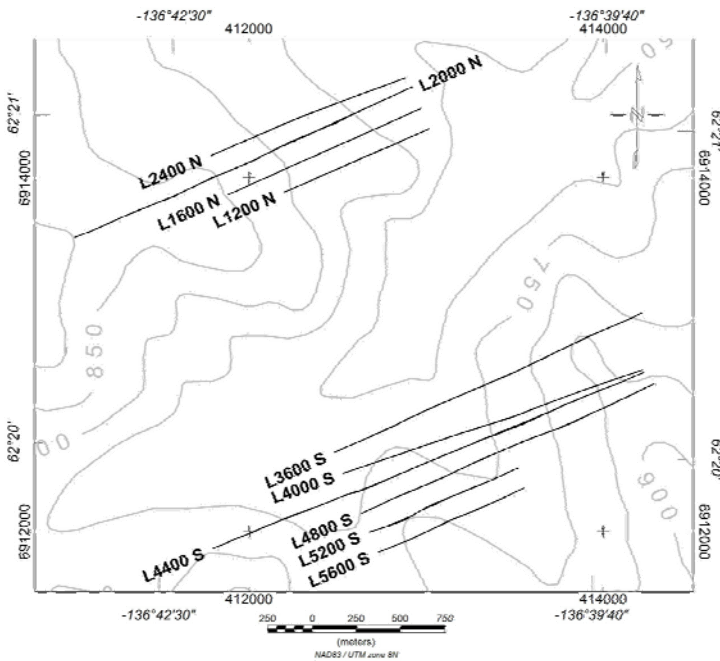
STACKED PSEUDOSECTIONS MAP
APPARENT CHARGEABILITY

Modified Pole-Dipole Array



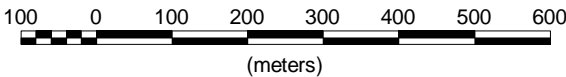
- L1200N Stationary electrode at West end of line.
- L1600N Stationary electrode at West end of line.
- L2000N Stationary electrode at Stations 1000W & 200E
- L2400N Stationary electrode at West end of line.

Receiver: Iris ElrecPro
Transmitter: GDD Tx-II 3.6kW
Data File: all lines 100m-final.gdb



Apparent Chargeability
mV/V

Scale 1:10000

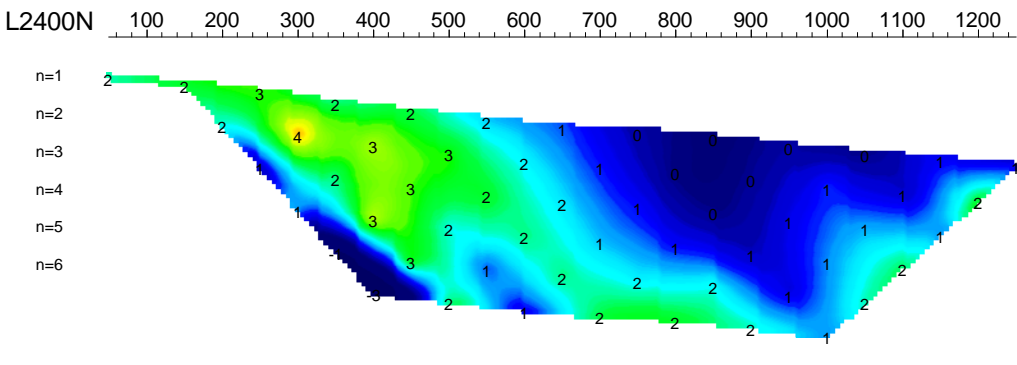


WESTERN COPPER CORPORATION

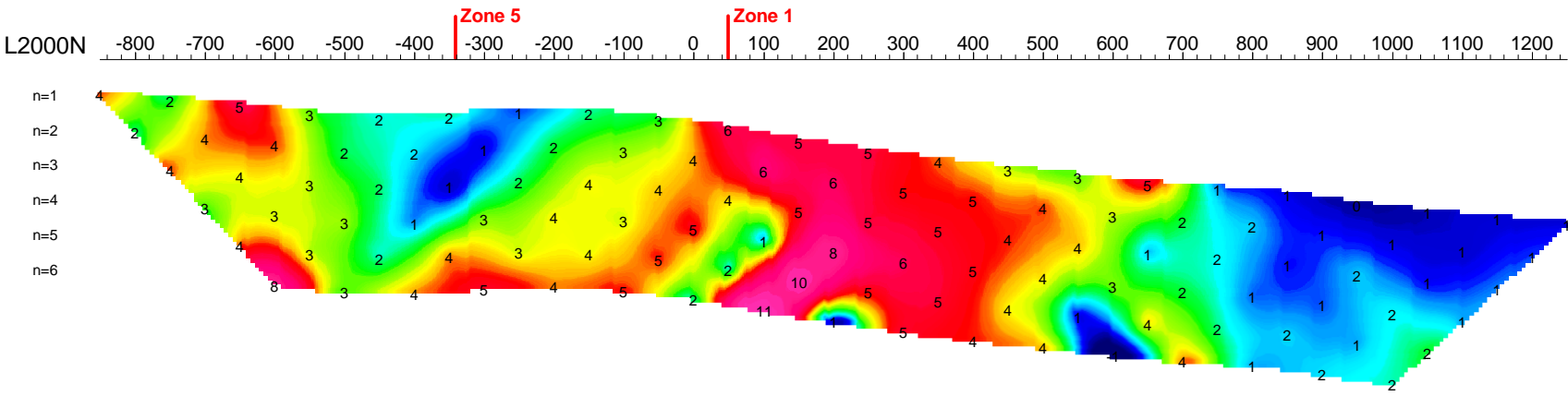
INDUCED POLARIZATION SURVEY
CARMACKS COPPER PROJECT
APPARENT CHARGEABILITY - 100m DIPOLES
STACKED SECTIONS - NORTH LINES

Mining District: Whitehorse
NTS: 115 I/07
Job: WRN-7506-YT
Datum: Local Grid
Drawn by: HS
Date: 15 Jan 08

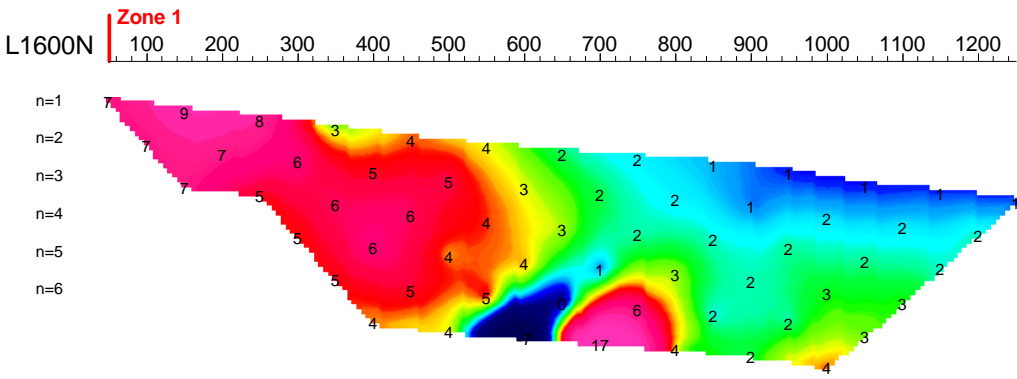
AURORA GEOSCIENCES LTD.



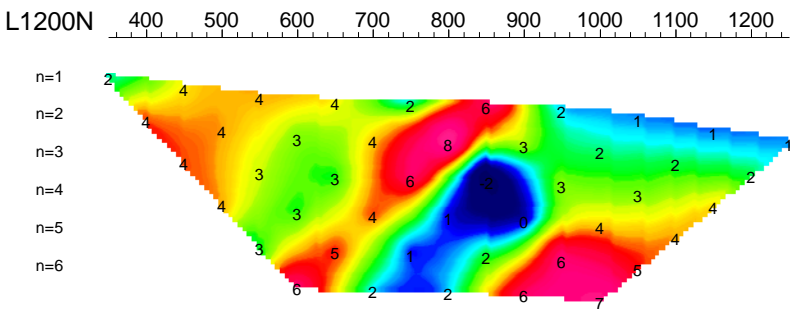
n=1
n=2
n=3
n=4
n=5
n=6



n=1
n=2
n=3
n=4
n=5
n=6



n=1
n=2
n=3
n=4
n=5
n=6



n=1
n=2
n=3
n=4
n=5
n=6